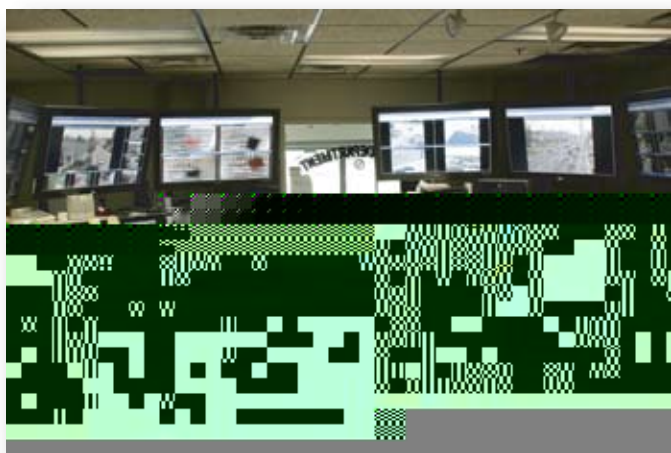


RECON VISION SkyCam

The SkyCam is a revolutionary tool that public safety agencies and departments have been waiting for. The SkyCam is a tough, durable, weatherproof and tamperproof box that contains a fully integrated recording system. Installation of the SkyCam is fast and easy; custom mounting brackets allow for easy relocation of the SkyCam. Recon Vision SkyCam units can be used as stand-alone units or as a multiple-unit network which can view an entire city.



SkyCam Applications

- Law Enforcement
- University Campuses
- Sports Stadiums
- Parking Structures
- Airports
- Train Stations
- Import/Export Ports
- Many More!

Features

- Full-Color, Full-Motion Video
- Remote Control Camera(s) with 32X Optical Zoom
- Up to 1 Mile Viewable Range from Each Unit
- View & Control Video from Command Center, Dispatch, 911 Centers, and Patrol Vehicles
- Motion Detection with Alarm Control
- Super Motion Video Compression
- Smart Motion Event Detection
- Continuous Recording
- Low Bandwidth Usage
- Custom Mounting Brackets
- Up to 30 Frames per Second
- Event Alarm Marking
- Customized Your SkyCam Box with Your Logo and Colors

Gunshot Location Detection Now Available!

See Reverse Side!



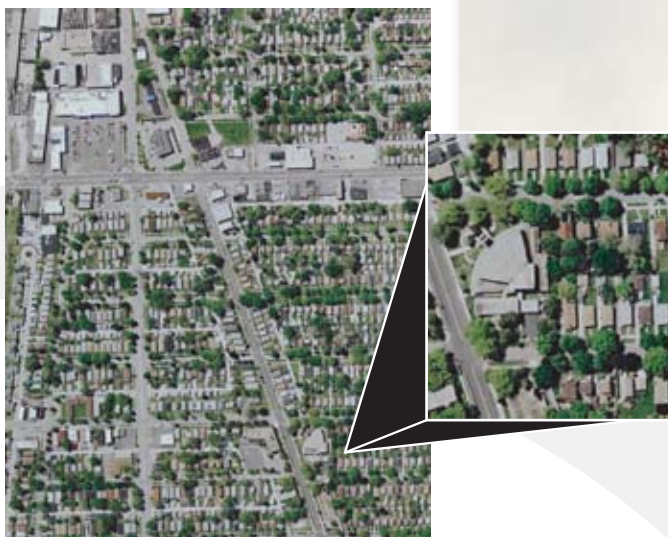
For More Details on SkyCam visit us at currenttech.net

RECON VISION SkyCam

Gunshot Location System

SkyCam is now integrated with a Gunshot Location System which will give dispatch instant location of gunfire as it happens. This technology helps law enforcement officers respond quickly to keep citizens safe and points investigation to hard evidence.

The Gunshot Location System detects and locates gunfire in urban areas, helping law-enforcement officers rapidly respond to a shooting without waiting for it to be reported. Designed to capture gunfire from events as far as two miles away, they also have a large storage capacity for recording events for later forensic or court purposes. The gunfire or weapon-event is displayed instantly on an aerial map of the city at dispatch with a precise location, information regarding which sensors detected it, and, if there are multiple shots, which direction the shooter is traveling, if at all. The system can tell the difference between a gunshot, a firecracker and a car backfiring, and in most cases is accurate to within 10 to 20 feet of where the shot was fired.



“Recon Vision’s line of surveillance products have dramatically helped us extend the reach of our police department, and provides an unprecedented capability to protect our citizens”

***– Donald J. Goncher
Chief of Police City of West Chicago***